

Woodman Avenue Multi-Beneficial Stormwater Capture Project



Presented By:

Los Angeles Department of Water and Power
Water Resources Division,
Watershed Management Group
Los Angeles Department of Public Works
Bureau of Sanitation, Watershed Protection
& Bureau of Street Services



Melanie Winter
The River Project



June 28, 2011

Background

Tujunga/ Pacoima Watershed Area



Source: Tujunga/Pacoima Watershed Plan, 2007

Existing Site Conditions



Project Scope: Conceptual Plan

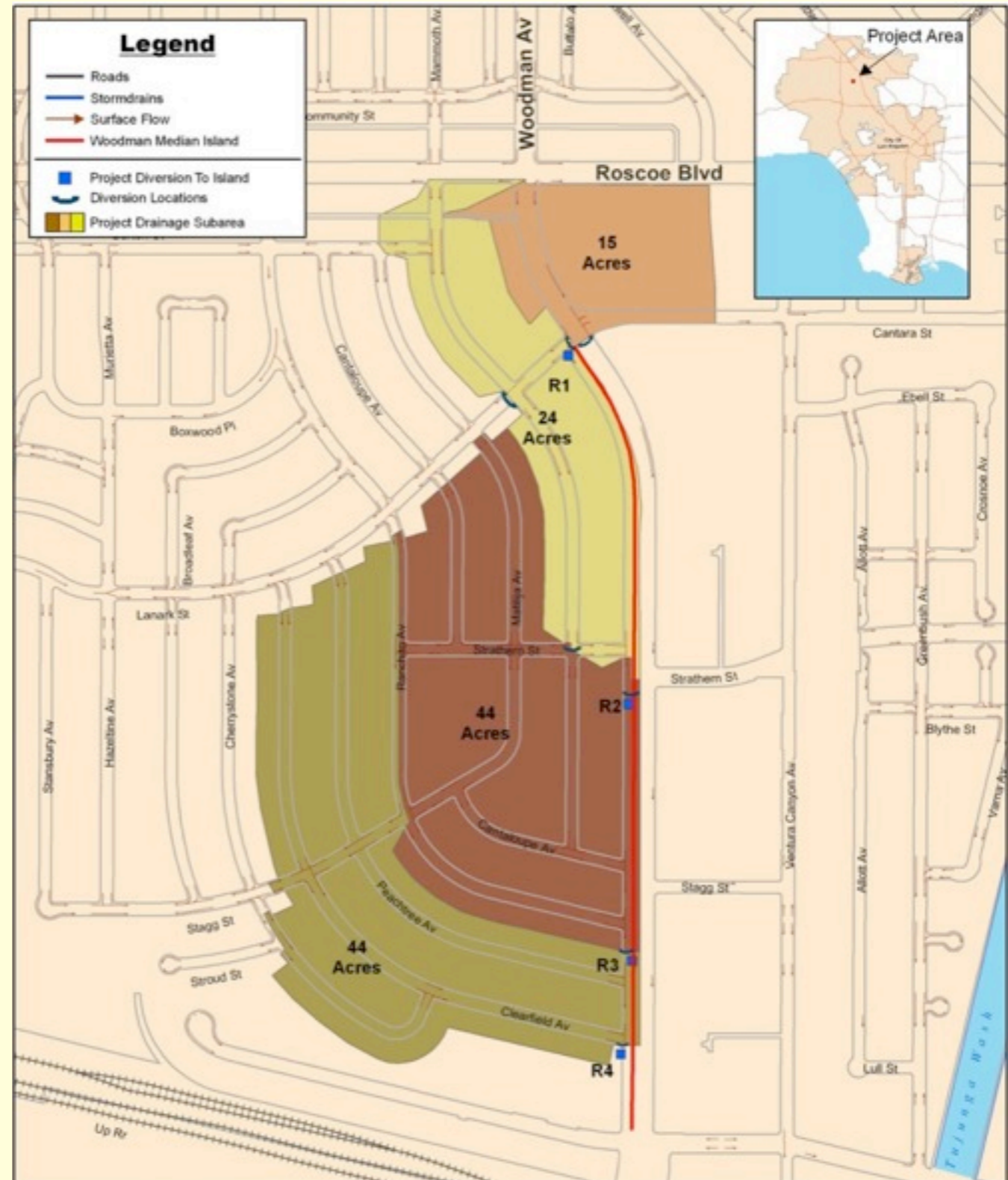


Length of Median: 3,500 Feet

Width of Median: 16 Feet

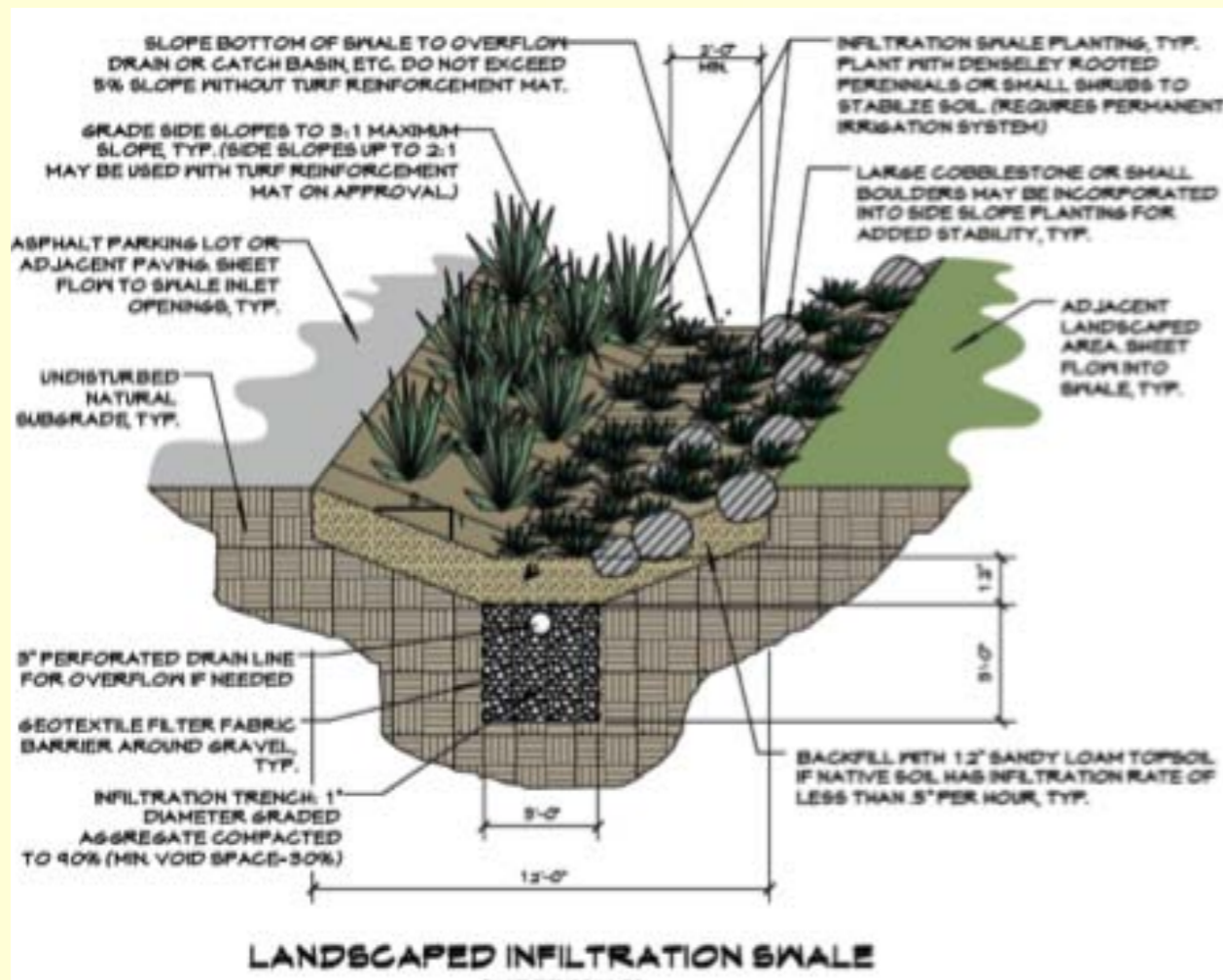
Project Drainage Area

- Project will capture stormwater runoff from an approximate 130-acre drainage area
- Captured stormwater will help recharge local groundwater table and alleviate local flooding



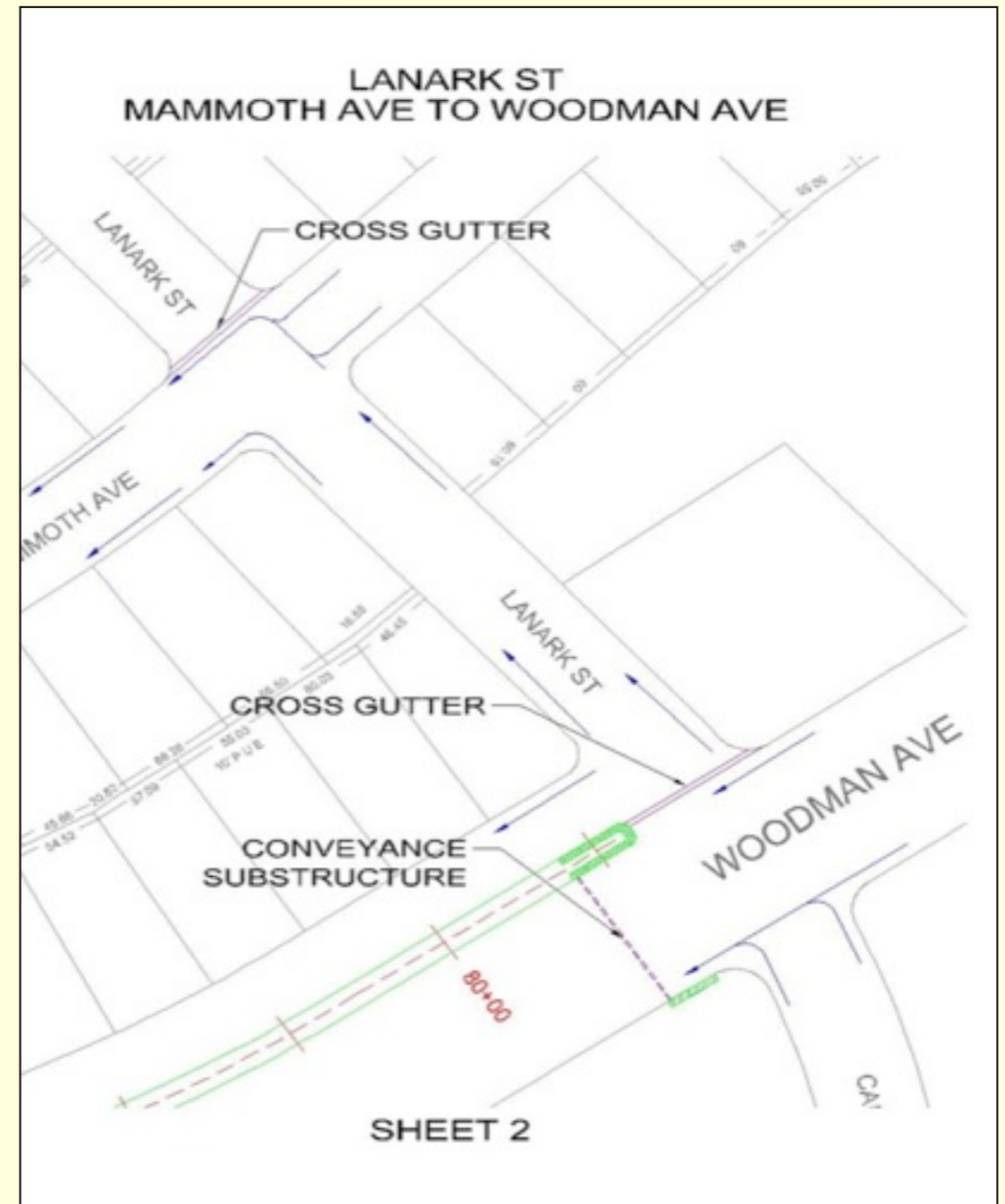
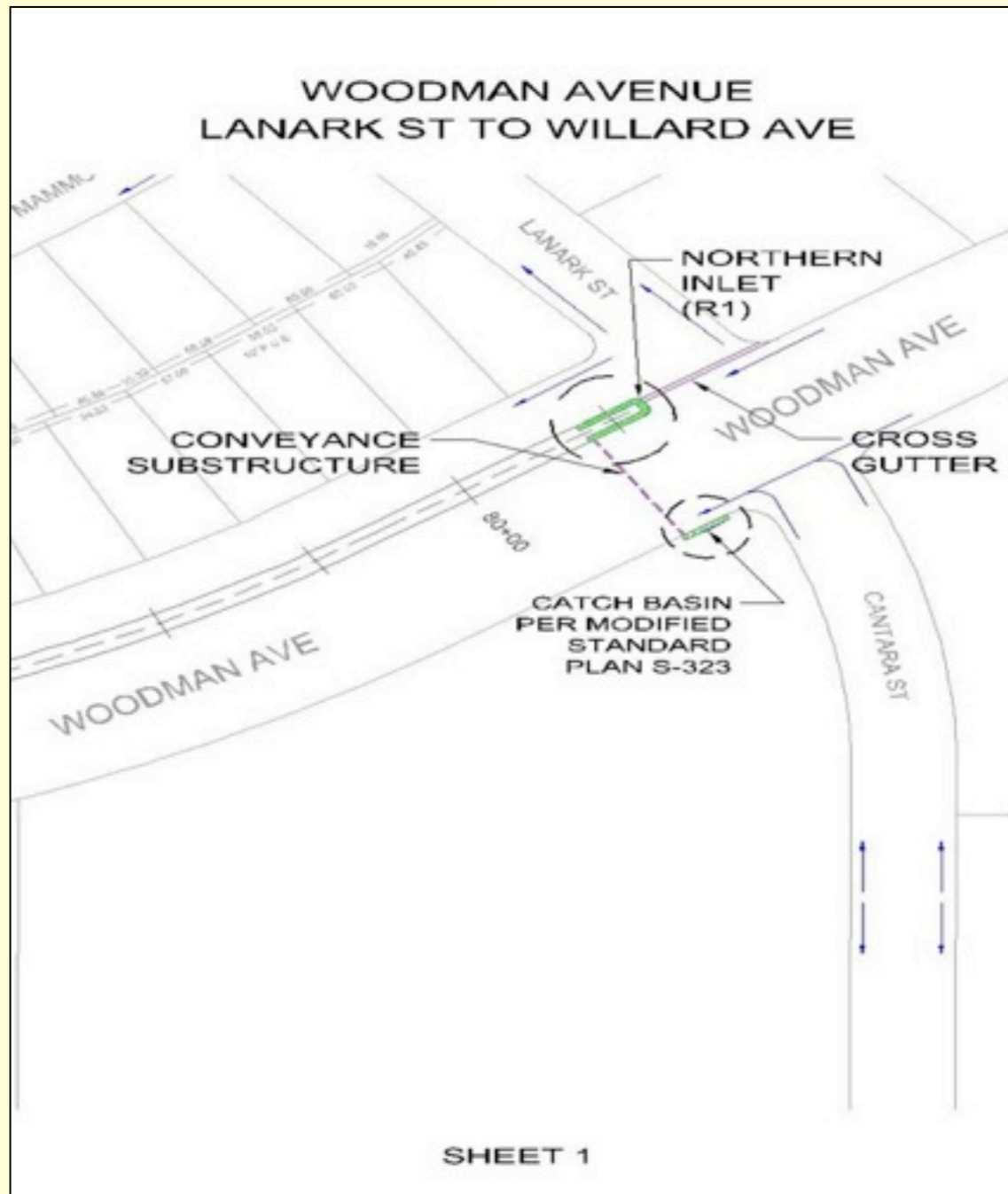
Proposed Improvements

Sketch of Typical Infiltration Swale

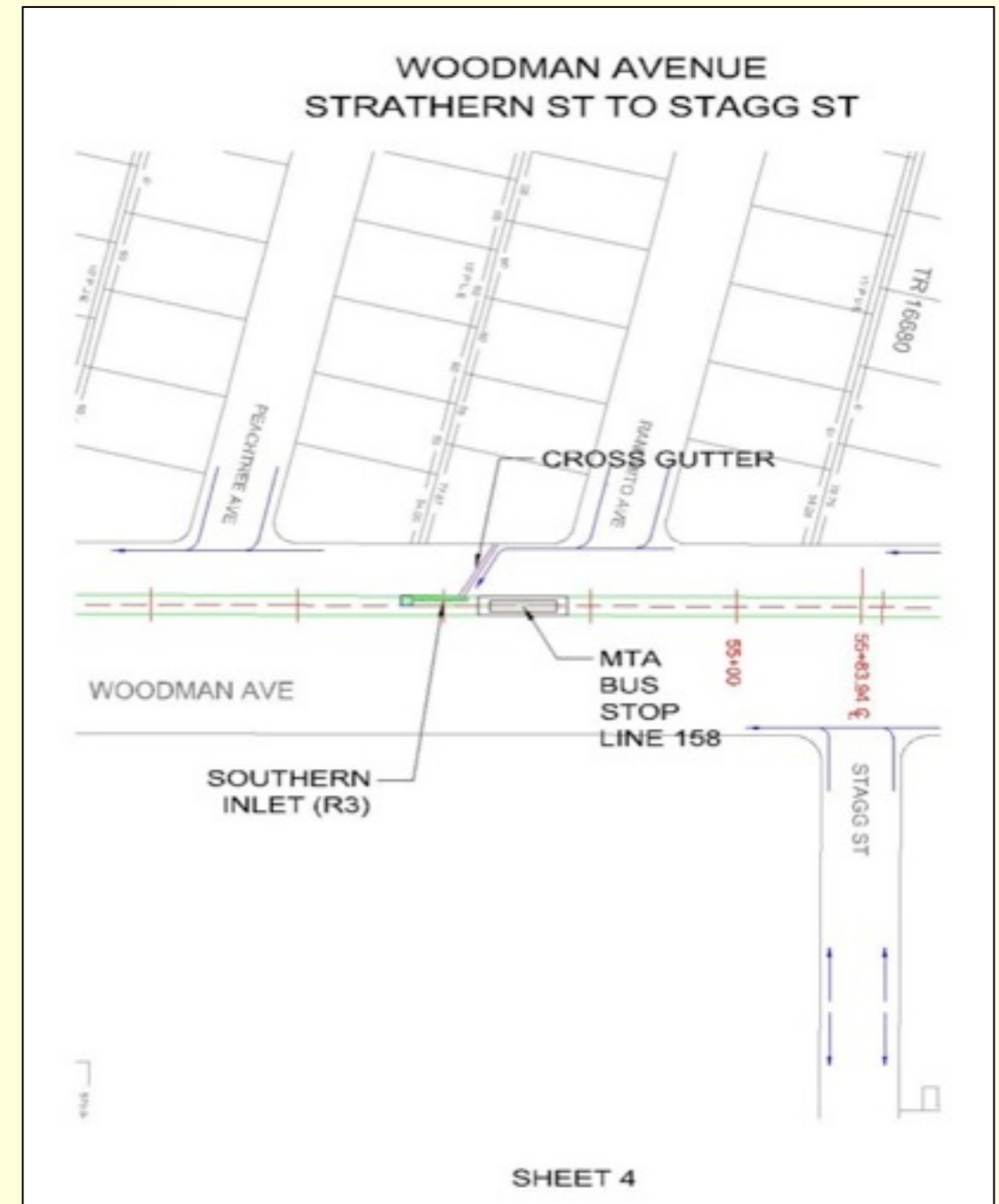
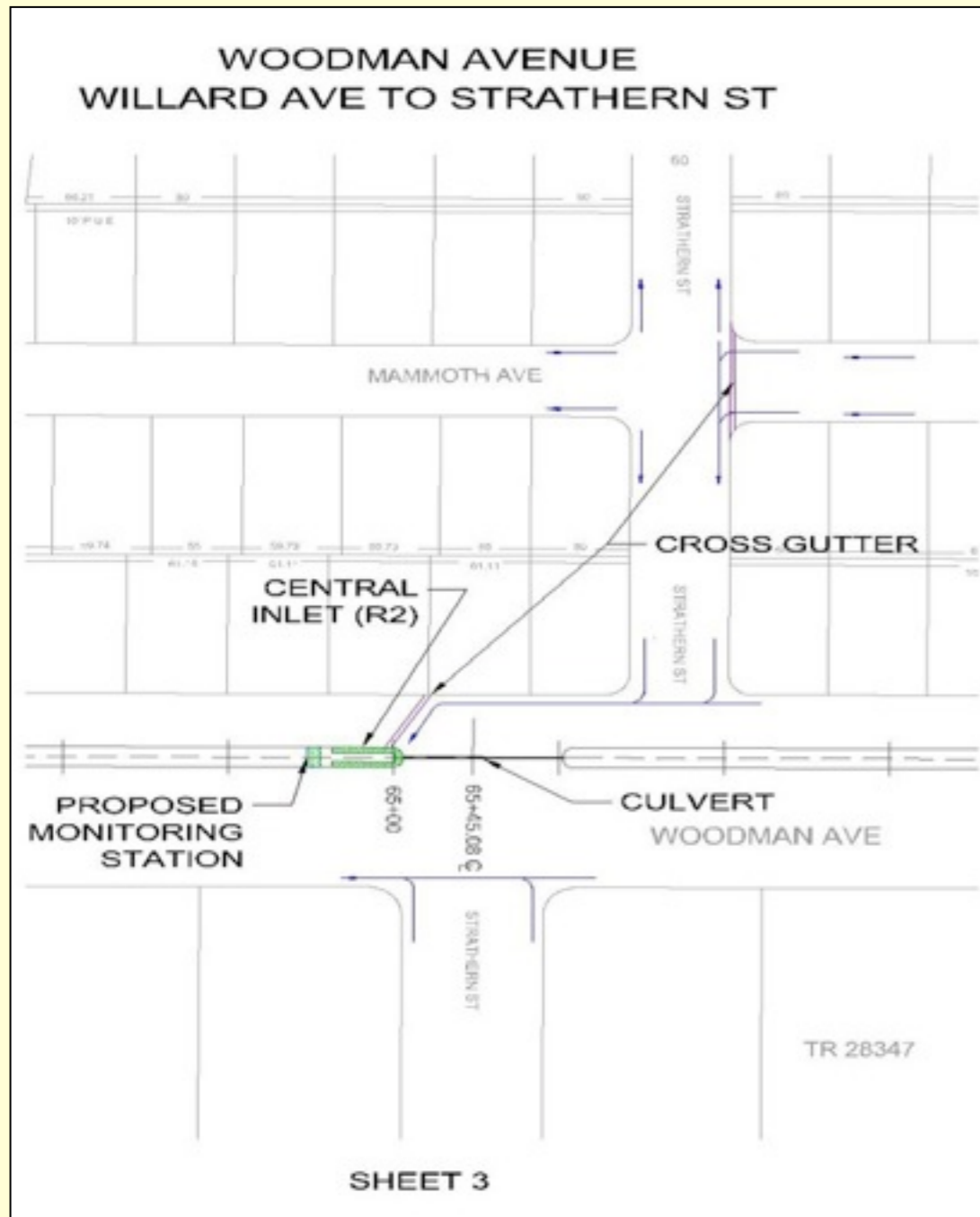


- Remove asphalt paving
- Construct stormwater inlet structures, cross gutters, and culverts
- Create a meandering infiltration swale
- Grade a pedestrian walking path
- Plant native vegetation
- Provide bench seating and signage

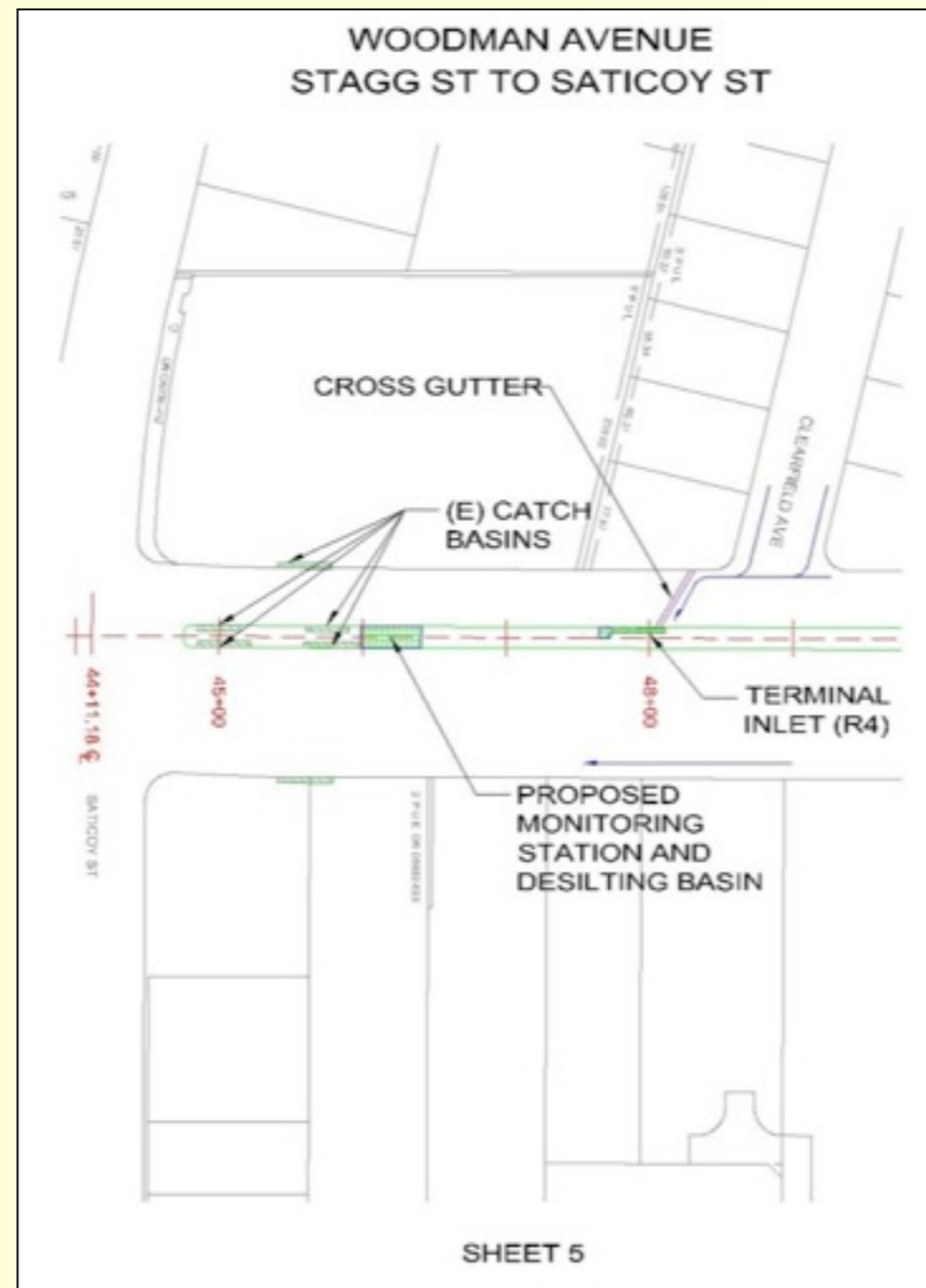
Diversion Structure Locations



Diversion Structure Locations



Diversion Structure Locations



Actions on Stakeholder Comments

- **Proposed Crosswalk** at Woodman Avenue and Stagg Street
 - Application will be submitted for state ‘Safe Routes to Schools’ grant.
- **Magnolia Trees**
 - Arborist assessment completed. Recommends only healthy smaller trees for transplantation
 - We will work with homeowners wishing to adopt a healthy small tree

Project Design Meetings

June – November 2011

Pre-design Meeting

June 2011

50% Design Plan Meeting

September 2011

100% Design Plan Meeting

October 2011

Pre-Construction Meeting

November 2011

Construction Schedule

November 2011 – October 2012

Sequence of Construction

- **Site Preparation**
- **Diversion Structures**
- **Infiltration Swales**
- **Detention Chambers**
- **Pedestrian Path**
- **Landscaping**
- **Street Furniture**

Education and Capacity Building

- Education Program

Ranchito Elementary School

Fall 2011



- Community Workshop Series

Spring 2012



Questions & Answers



Los Angeles
Department of
Water & Power

CITY OF LOS ANGELES



SANITATION
DEPARTMENT OF
PUBLIC WORKS

